

NEW PRODUCT BULLETIN

Boltaflex® Contract Upholstery

Not for the faint of heart, *Antigua* features a crocodile emboss in fifteen eye-catching colors that include three rich metallics. *Antigua* is a sure winner for projects where a touch of drama is desired.

Antigua features a soft hand for ease of upholstering while delivering performance in an environmentally preferred construction. *Antigua* is constructed from 100% polyurethane with a polyester backing and does not contain PVC, plasticizers or phthalates.

ANTIGUA

Color Offerings



White
ANT-015



Ecru
ANT-001



Malt
ANT-002



Russet
ANT-008



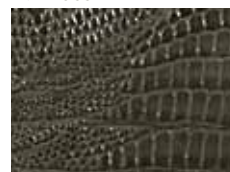
Chameleon
ANT-003



Bark
ANT-007



Komodo
ANT-004



Rainforest
ANT-005



Redwood
ANT-006



Kona
ANT-010



Black Cherry
ANT-009



Black
ANT-014



Copper
ANT-012



Gold
ANT-011



Silver
ANT-013

Boltaflex®

CONTRACT
UPHOLSTERY

NEW
PRODUCT
BULLETIN

ANTIGUA

Features:

Polyurethane face, polyester knit backing

Specifications:

Width 54"

Weight 16.5 oz. / lin. yd.

Abrasion . . . 10,000 cycles stainless steel screen wire,
200,000 cycles CFFA-1a #8 cotton duck

Meets or exceeds:
California Tech. Bull. 117, section E
NFPA 260

UFAC Fabric, Class 1

Lightfastness (QUV). 40 hours indoors

Applications:

- Healthcare • Hospitality • Corporate
- Marine • Residential

For cleaning instructions and detailed specification information, visit www.omnova.com/boltaflex

Boltaflex[®]

CONTRACT
UPHOLSTERY