

NEW PRODUCT BULLETIN

Boltaflex® Contract Upholstery

Cabo is a unique and sophisticated leather grain suitable for a variety of applications. The color palette features 19 hues ranging from earthy neutrals to rich, jewel tones.

Cabo features a soft hand for ease of upholstering while delivering performance in an environmentally preferred construction. *Cabo* is constructed from 100% polyurethane with a polyester backing and does not contain PVC, plasticizers or phthalates.

C A B O

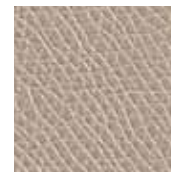
Color Offerings



Chalk
CAB-001



Custard
CAB-002



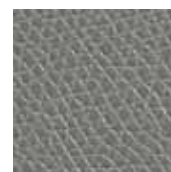
Oasis
CAB-003



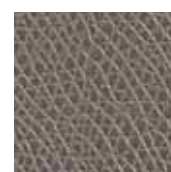
Wheat
CAB-005



Chamois
CAB-006



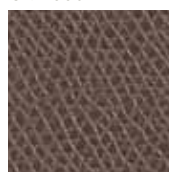
Pebble
CAB-004



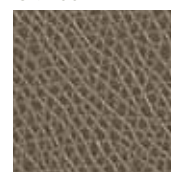
Pelican
CAB-007



Toast
CAB-009



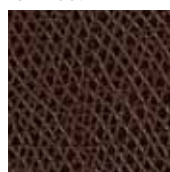
Mink
CAB-008



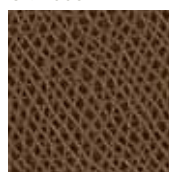
Moss
CAB-10



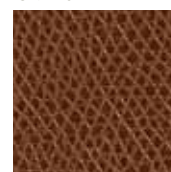
Rio Blue
CAB-011



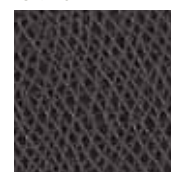
French Roast
CAB-016



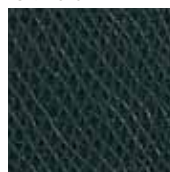
Hazelnut
CAB-015



Cider
CAB-012



Iron Ore
CAB-013



Aspen
CAB-014



Cassis
CAB-017



Riviera
CAB-018



Licorice
CAB-019

Boltaflex®

CONTRACT
UPHOLSTERY

NEW
PRODUCT
BULLETIN



C A B O

Features:

Polyurethane face, polyester knit backing

Specifications:

Width 54"

Weight 16.5 oz. / lin. yd.

Abrasion . . . 10,000 cycles stainless steel screen wire,
200,000 cycles CFFA-1a #8 cotton duck

Meets or exceeds:
California Tech. Bull. 117, section E
NFPA 260

UFAC Fabric, Class 1

Lightfastness (QUV). 40 hours indoors

Applications:

- Healthcare • Hospitality • Corporate
- Marine • Residential

For cleaning instructions and detailed specification information, visit www.omnova.com/boltaflex

Boltaflex[®]

CONTRACT
UPHOLSTERY



OMNOVA Solutions Inc. • 175 Ghent Road • Fairlawn, OH 44333
Telephone: 330-869-4200 • www.omnova.com

BOLTAFLEX is a registered trademark of OMNOVA Solutions Inc
ALL OMNOVA PRODUCTS AND SERVICES ARE OFFERED AND SOLD SUBJECT TO THE OMNOVA
STANDARD TERMS AND CONDITIONS OF SALE AGREEMENT SET FORTH AT WWW.OMNOVA.COM.
© 2009 OMNOVA Solutions Inc. 5/09