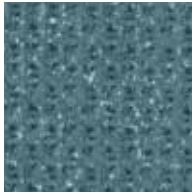




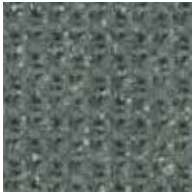
Lapis
544742



Courtyard
544745



Tahitian Sea
544740



Succulent
544737



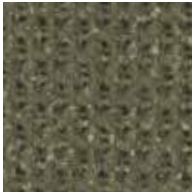
Deep Ocean
544738



Husk
544744



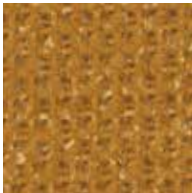
Golden Moss
544733



Arbor
544735



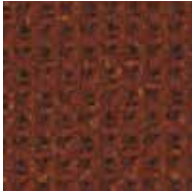
Green Olive
544736



Kumquat
544734



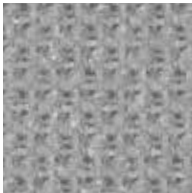
Marmalade
544732



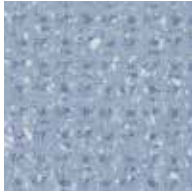
Pico
544731



Red Plum
544730



Luna
544743










Heather Blue
544739



Lapis
544742



Black Sheep
544741

Content	100% PVC face, polyester terry loop knit backing
Features	Eco-preferred construction <ul style="list-style-type: none"> - Phthalate free - Antimicrobial (MR) and flame retardant (FR) free - Complies with Section 101: Lead, and Section 108: Phthalates of the CPSIA and RoHS directive (Updated March 2015) - Formulated without PFAS (Per- and Polyfluoroalkyl Substances) Chemicals
Finish	PreFixx® protective finish for increased stain resistance and easy cleaning. Bleach cleanable and may be disinfected with a variety of hospital grade disinfectants without discoloring or damaging the finish. Disinfection does not replace the need for regular care and maintenance. For a list of recommended disinfectants, view the Coated Fabrics Chemical Resistance Technical Bulletin located at https://www.omnova.com/fileadmin/Resource_Center/Coated_Fabrics/Technical_Bulletins/OMN-ChemRes-TB.pdf .
Weight	28 oz/lin. yd [18.7 oz/yd ²] / 849 g/lin. m [619 g/m ²]
Width	54 in [137 cm]
Repeat	18" wide x 18" high
Performance Requirements	Meets or exceeds: <p>ACT Performance Guidelines CFFA Healthcare 201 Certified Ethos™</p> <div style="display: flex; justify-content: space-around; align-items: center;">        </div> <p>Also meets or exceeds:</p> <ul style="list-style-type: none"> • CFFA-1a Wyzenbeek - 1.3 million double rubs (cotton duck abradant) • BIFMA, Class A • California Technical Bulletin 117-2013, Section 1 • NFPA 260, Class 1 • UFAC Fabric, Class 1
Applications	Indoor <ul style="list-style-type: none"> • Corporate Office • Food Service • Healthcare • Hospitality and Entertainment • Recreational Vehicles • Retail

Though our upholsteries can be used in many applications, customers are responsible for selecting an upholstery with attributes that meet the requirements of the specific end-use application – not all upholstery is suitable for all applications.

Multiple factors affect fabric durability and appearance retention, including end-user application and proper maintenance. Wyzenbeek results above 100,000 double rubs have not been shown to be a reliable indicator of increased fabric lifespan.

For additional cleaning instructions and detailed specification information, visit: www.omnova.com