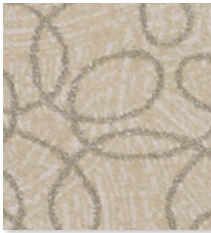




Aloe
540597



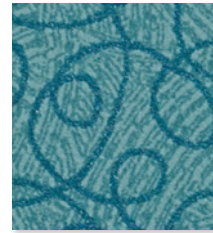
Stone
540602



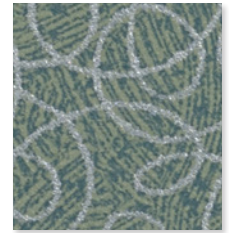
Cinnamon
540601



Aloe
540597



Teal Wave
540590



Sea Breeze
540598



Persimmon
540596



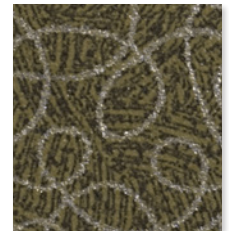
Freesia
540772



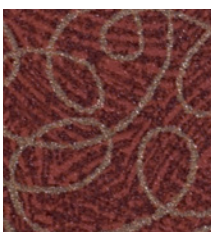
Shitake
540603



Reflection Blue
540599



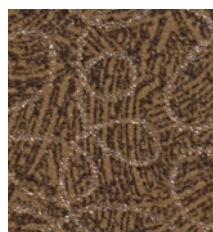
Olive
540595



Lava
540592



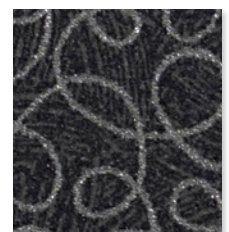
Espresso
540600



Coppertone
540593



Basin Blue
540591



Midnight
540594



Content	100% PVC face, polyester brushed knit backing
Finish	PreFixx® protective finish for increased stain resistance and easy cleaning. Bleach cleanable and may be disinfected with a variety of hospital grade disinfectants without discoloring or damaging the finish. Disinfection does not replace the need for regular care and maintenance. For a list of recommended disinfectants, view the Coated Fabrics Chemical Resistance Technical Bulletin located at https://www.omnova.com/product-types/coated-fabrics-upholstery/for-healthcare .
Weight	28 oz/lin. yd [18.7 oz/yd ²] / 849 g/lin. m [619 g/m ²]
Width	54 in [137 cm]
Performance Requirements	Meets or exceeds ACT Performance Guidelines



Also meets or exceeds:

- CFFA-1a Wyzenbeek - 1.3 million double rubs (cotton duck abradant)
- Fungal resistance ASTM G-21-13
- Bacterial resistance AATCC 147-2011 & AATCC 100-2004
- Oil resistance CFFA-13
- Surface resistance AATCC-76 Antistatic
- Urine resistance AATCC-6 Colorfastness to Acids and Alkali
- Resistance to sulfide stain ASTM D 1712
- BIFMA, Class A
- California Technical Bulletin 117-2013, Section 1
- IMO Part 8 Upholstered Furniture 3.1 Smoldering Cigarette
- IMO Part 8 Upholstered Furniture 3.2 Propane Flame
- NFPA 260, Class 1
- UFAC Fabric, Class 1



Applications	Indoor/Outdoor • Corporate Office • Food Service • Healthcare • Hospitality and Entertainment • Recreational Vehicles • Retail
---------------------	--

Though our upholsteries can be used in many applications, customers are responsible for selecting an upholstery with attributes that meet the requirements of the specific end-use application – not all upholstery is suitable for all applications.

Multiple factors affect fabric durability and appearance retention, including end-user application and proper maintenance. Wyzenbeek results above 100,000 double rubs have not been shown to be a reliable indicator of increased fabric lifespan.

For additional cleaning instructions and detailed specification information, visit: www.omnova.com



North American Office
25435 Harvard Road
Beachwood, OH 44122
United States
PHONE +1 800 457-9900



ALL OMNOVA PRODUCTS AND SERVICES ARE OFFERED AND SOLD SUBJECT TO THE OMNOVA STANDARD TERMS AND CONDITIONS OF SALE AGREEMENT SET FORTH AT WWW.OMNOVA.COM

*ACT Performance Guidelines icons are registered certification marks owned by the Association for Contract Textiles, Inc. BOLTAFLEX and PREFIXX are registered trademarks of OMNOVA Solutions Inc. Designed and manufactured by OMNOVA Solutions.

© 2020 OMNOVA Solutions Inc. DTC. August 2020
OMNOVA Solutions Inc., a Synthomer company