



Aqua
514659



Neutral
518383



Sunshine
518945



Chartreuse
514590



Chive
514850



Apricot
525976



Adobe
514831



Rouge
514987



Santa Rosa
514797



Aqua
514659



Shimmer
514624



Periwinkle
514986



Crocus
514779



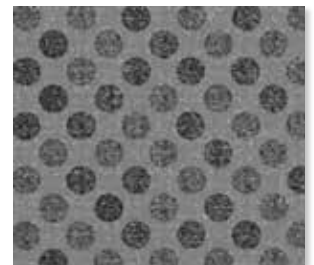
Maplewood
514941



Mocha
514832



Pewter
514830



Graphite
514867

Content	100% vinyl face, polyester knit backing
Finish	PreFixx [®] protective finish for increased stain resistance and easy cleaning. Bleach cleanable and may be disinfected with a variety of hospital grade disinfectants without discoloring or damaging the finish. Disinfection does not replace the need for regular care and maintenance.
Width	54 in. [137 cm]
Weight	28 oz/lin. yd. [18.7 oz/yd ²] / 849 g/lin. m [619 g/m ²]
Performance Requirements	Meets or exceeds ACT [®] Performance Guidelines



Also meets or exceeds:

- CFFA-1a wyzenbeek - 1.3 million double rubs abrasion (cotton duck abradant)
- Fungal resistance ASTM G-21-13
- Bacterial resistance AATCC 147-2011 & AATCC 100-2004
- BIFMA, Class A
- Boston Fire Dept. IX-1
- California Technical Bulletin 117-2013, Section 1
- FAR 25.853A
- Federal Standard CID A-A-2950-A
- FMVSS-302
- IMO Part 8 Upholstered Furniture 3.1 Smoldering Cigarette
- IMO Part 8 Upholstered Furniture 3.2 Propane Flame
- NFPA 701 Small Scale
- NFPA 260, Class 1
- NY/NJ Port Authority
- UFAC Fabric, Class 1

Applications	Indoor/Outdoor
	<ul style="list-style-type: none"> • Corporate Office • Healthcare • Recreational Vehicles <ul style="list-style-type: none"> • Food Service • Hospitality and Entertainment • Retail

Though our upholstery can be used in many applications, customers are responsible for selecting an upholstery with attributes that meet the requirements of the specific end-use application – not all upholstery is suitable for all applications.

Multiple factors affect fabric durability and appearance retention, including end-user application and proper maintenance. Wyzenbeek results above 100,000 double rubs have not been shown to be a reliable indicator of increased fabric lifespan.

For additional cleaning instructions and detailed specification information, visit: www.omnova.com/boltaflex



World Headquarters
 25435 Harvard Road
 Beachwood, OH 44122
 United States
 PHONE +1 216 682-7000
 FAX +1 216 453-0104

ALL OMNOVA PRODUCTS AND SERVICES ARE OFFERED AND SOLD SUBJECT TO THE OMNOVA STANDARD TERMS AND CONDITIONS OF SALE AGREEMENT SET FORTH AT WWW.OMNOVA.COM

*ACT Performance Guidelines icons are registered certification marks owned by the Association for Contract Textiles, Inc.
 BOLTAFLEX and PREFIX are registered trademarks of OMNOVA Solutions Inc.
 Designed and manufactured by OMNOVA Solutions Inc.

© 2017 OMNOVA Solutions Inc. DTC. November 2017