

Seaport  
532979



Thistle  
532978



Beach Sand  
521626



Chalk  
532971



Graystone  
532973



Blue Moon  
532975



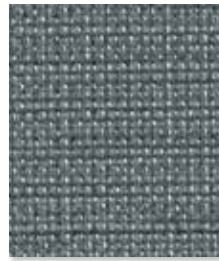
Camel  
521627



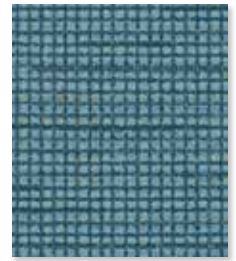
Jonquil  
521631



Prairie Green  
521634



Citadel  
532976



Dungaree  
521629



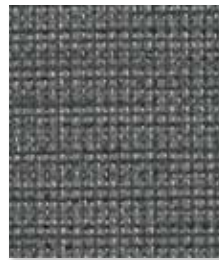
Sienna  
521635



Angora  
521625



Silverstone  
521636



Iron  
532974



Misty Blue  
521633



Gypsy Rose  
521630



Citron  
532977



Caper  
521628



After Dark  
521624



Mallard  
521632

Content	100% PVC face, polyester terry loop knit backing
Finish	<b>PreFixx</b> <sup>®</sup> protective finish for increased stain resistance and easy cleaning. Bleach cleanable and may be disinfected with a variety of hospital grade disinfectants without discoloring or damaging the finish. Disinfection does not replace the need for regular care and maintenance.
Width	54 in. [137 cm]
Weight	28 oz/lin. yd. [18.7 oz/yd <sup>2</sup> ] / 849 g/lin. m [619 g/m <sup>2</sup> ]
Performance Requirements	Meets or exceeds ACT <sup>®</sup> Performance Guidelines



Also meets or exceeds:

- CFFA-1a Wyzenbeek - 1.3 million double rubs (cotton duck abradant)
- Fungal resistance ASTM G-21-13
- Bacterial resistance AATCC 147-2011 & AATCC 100-2004
- Oil resistance CFFA-13
- Surface resistance AATCC-76 Antistatic
- Urine resistance AATCC-6 Colorfastness to Acids and Alkali
- Resistance to sulfide stain ASTM D 1712
- ASTM E-84 Adhered to GRC, Class 1 or A
- BIFMA, Class A
- Boston Fire Dept. IX-1
- California Technical Bulletin 117-2013, Section 1
- FAR 25.853a & Appendix F Part 1 (a)(1)(ii)
- Federal Specification CID A-A-2950A
- FMVSS-302
- IMO Part 8 Upholstered Furniture 3.1 Smoldering Cigarette
- IMO Part 8 Upholstered Furniture 3.2 Propane Flame
- NFPA 701 Small Scale
- NFPA 260, Class 1
- NY/NJ Port Authority
- UFAC Fabric, Class 1

Applications	Indoor/Outdoor	
	<ul style="list-style-type: none"> <li>• Corporate Office</li> <li>• Healthcare</li> <li>• Recreational Vehicles</li> </ul>	<ul style="list-style-type: none"> <li>• Food Service</li> <li>• Hospitality and Entertainment</li> <li>• Retail</li> </ul>

*Though our upholstery can be used in many applications, customers are responsible for selecting an upholstery with attributes that meet the requirements of the specific end-use application – not all upholstery is suitable for all applications.*

*Multiple factors affect fabric durability and appearance retention, including end-user application and proper maintenance. Wyzenbeek results above 100,000 double rubs have not been shown to be a reliable indicator of increased fabric lifespan.*

For additional cleaning instructions and detailed specification information, visit: [www.omnova.com](http://www.omnova.com)



**World Headquarters**  
25435 Harvard Road  
Beachwood, OH 44122  
United States  
PHONE +1 216 682-7000  
FAX +1 216 453-0104