



Aerial

Boltaflex Ethos™

No Phthalates - No FR - No MR

Boltaflex®

Introducing Aerial

Aerial, a new **Boltaflex Ethos™** upholstery pattern, is free of phthalates, fire retardants (FR) and antimicrobials (MR).

With no FR, MR or phthalates, **Boltaflex Ethos** patterns provide strong performance and a long lifecycle.

Including 12 colorways, *Aerial* is inspired by the view from above. It simplifies busy streets into a meditative and connected pattern, reminiscent of a leaf structure under microscopic view. *Aerial* is perfect for health care settings.

Featuring our industry-leading **PreFixx®** Protective Finish, *Aerial* offers exceptional stain and chemical resistance for maximum compatibility with a broad range of cleaners and disinfectants.

To learn more or to order samples, visit www.omnova.com/aerial

Features & Benefits



Eco-Preferred

Does not contain phthalates, fire retardants or antimicrobial additives

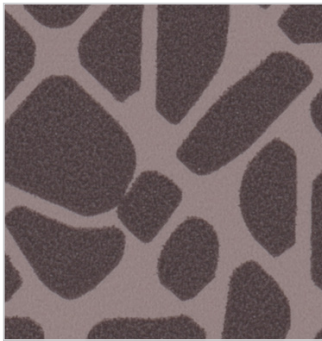
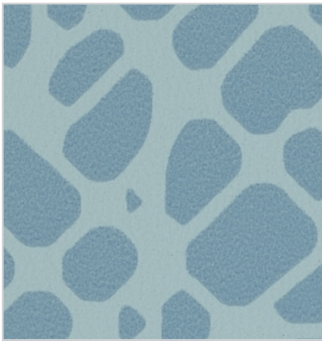
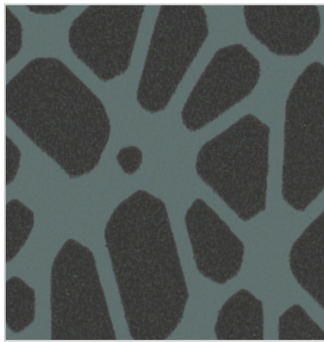
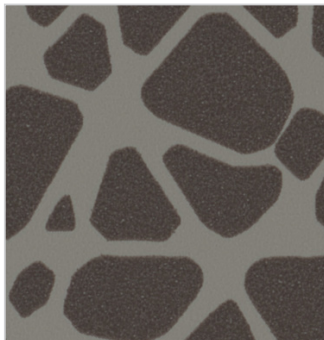


PreFixx Finish

State-of-the-art resistance to staining, abrasion, scuffing, burnishing and blocking. Engineered to resist stains from many common disinfecting agents.

Aerial

Available Colors



Aerial

Content

100% PVC face, polyester terry loop knit backing

Features

Eco-preferred construction

- Phthalate free
- Antimicrobial (MR) and flame retardant (FR) free
- Complies with *Section 101: Lead*, and *Section 108: Phthalates* of the CPSIA and RoHS directive (Updated March 2015)

Finish

PreFixx® protective finish for increased stain resistance and easy cleaning. Bleach cleanable and may be disinfected with a variety of hospital grade disinfectants without discoloring or damaging the finish. Disinfection does not replace the need for regular care and maintenance.

Weight

28 oz/lin. yd [18.7 oz/yd²] / 849 g/lin. m [619 g/m²]

Width

54 in [137 cm]

Performance Requirements

Meets or exceeds ACT Performance Guidelines



Also meets or exceeds:

- CFFA-1a Wyzenbeek - 1.3 million double rubs (cotton duck abradant)
- BIFMA, Class A
- California Technical Bulletin 117-2013, Section 1
- NFPA 260, Class 1
- UFAC Fabric, Class 1

Applications

Indoor

- Corporate Office • Food Service • Healthcare • Hospitality and Entertainment
- Recreational Vehicles • Retail

For detailed specifications, please visit www.omnova.com/aerial

Though our upholsteries can be used in many applications, customers are responsible for selecting an upholstery with attributes that meet the requirements of the specific end-use application – not all upholstery is suitable for all applications.

Multiple factors affect fabric durability and appearance retention, including end-user application and proper maintenance. Wyzenbeek results above 100,000 double rubs have not been shown to be a reliable indicator of increased fabric lifespan.

www.omnova.com



World Headquarters
25435 Harvard Road
Beachwood, OH 44122
United States
PHONE +1 800 457-9900

ALL OMNOVA PRODUCTS AND SERVICES ARE OFFERED AND SOLD SUBJECT TO THE OMNOVA STANDARD TERMS AND CONDITIONS OF SALE AGREEMENT SET FORTH AT WWW.OMNOVA.COM

*ACT Performance Guidelines icons are registered certification marks owned by the Association for Contract Textiles, Inc. BOLTAFLEX and PREFIXX are registered trademarks and BOLTAFLEX ETHOS is a trademark of OMNOVA Solutions Inc.

© 2020 OMNOVA Solutions Inc. January 2020