



# *Melange*

**Boltaflex Ethos™**

**No Phthalates - No FR - No MR**

# Boltaflex®

---

## Introducing Melange

*Melange*, a new **Boltaflex Ethos™** upholstery pattern is free of phthalates, fire retardants (FR) and antimicrobials (MR).

With no FR, MR or phthalates, **Boltaflex Ethos** patterns provide strong performance and a long lifecycle.

*Melange* includes 16 colorways and is inspired by Mid-Century Modern aesthetics and the knowledge of using hand-crafted techniques to industrially-produced fibers and materials. It is perfect for office, hospitality and health care settings.

Featuring our industry-leading **PreFixx®** Protective Finish, *Melange* offers exceptional stain and chemical resistance for maximum compatibility with a broad range of cleaners and disinfectants.

To learn more or to order samples, visit [www.omnova.com/melange](http://www.omnova.com/melange)

## Features & Benefits



### Eco-Preferred

Does not contain phthalates, fire retardants or antimicrobial additives

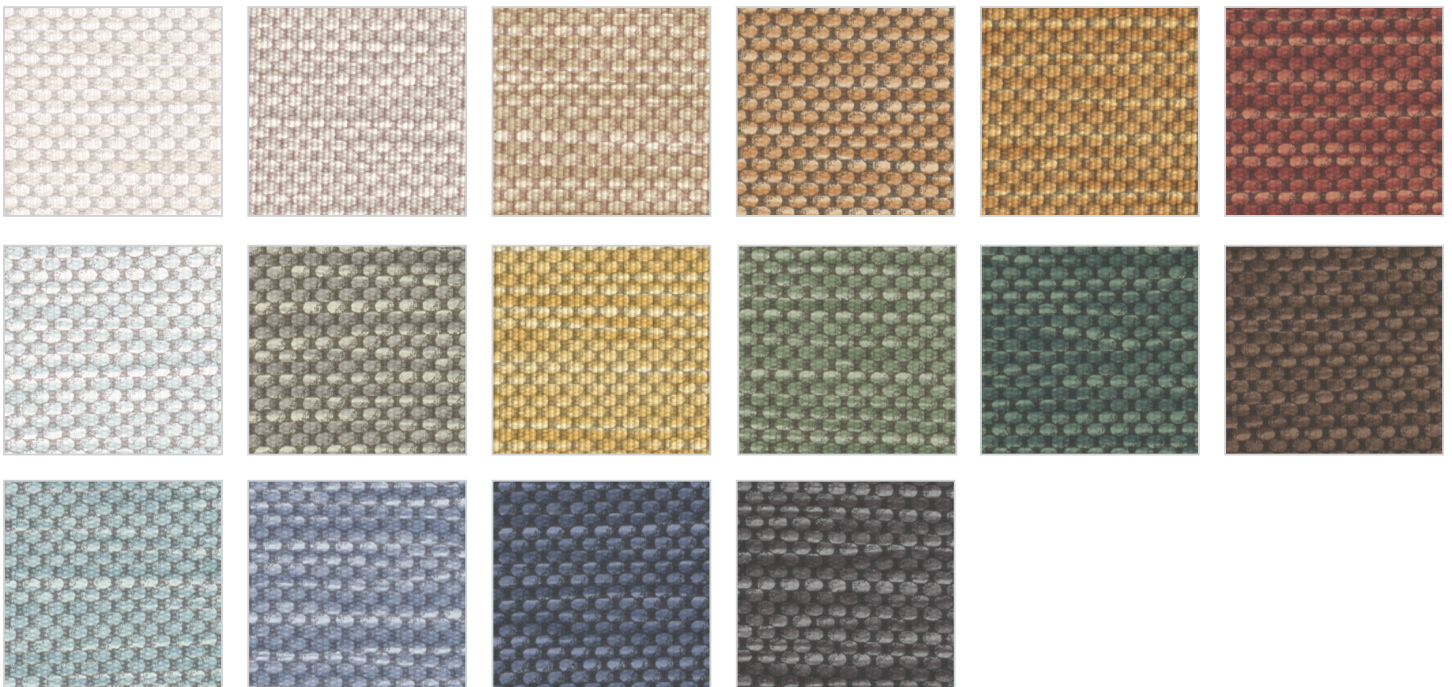


### PreFixx Finish

State-of-the-art resistance to staining, abrasion, scuffing, burnishing and blocking. Engineered to resist stains from many common disinfecting agents.


# Melange

## Available Colors



# Melange



<b>Content</b>	100% PVC face, polyester terry loop knit backing
<b>Features</b>	Eco-preferred construction <ul style="list-style-type: none"><li>- Phthalate free</li><li>- Antimicrobial (MR) and flame retardant (FR) free</li><li>- Complies with <i>Section 101: Lead</i>, and <i>Section 108: Phthalates</i> of the CPSIA and RoHS directive (Updated March 2015)</li></ul>
<b>Finish</b>	<b>PreFixx</b> <sup>®</sup> protective finish for increased stain resistance and easy cleaning. Bleach cleanable and may be disinfected with a variety of hospital grade disinfectants without discoloring or damaging the finish. Disinfection does not replace the need for regular care and maintenance.
<b>Weight</b>	28 oz/lin. yd [18.7 oz/yd <sup>2</sup> ] / 849 g/lin. m [619 g/m <sup>2</sup> ]
<b>Width</b>	54 in [137 cm]
<b>Performance Requirements</b>	Meets or exceeds ACT Performance Guidelines  Also meets or exceeds: <ul style="list-style-type: none"><li>• CFFA-1a Wyzenbeek - 1.3 million double rubs (cotton duck abradant)</li><li>• BIFMA, Class A</li><li>• California Technical Bulletin 117-2013, Section 1</li><li>• NFPA 260, Class 1</li><li>• UFAC Fabric, Class 1</li></ul>
<b>Applications</b>	Indoor <ul style="list-style-type: none"><li>• Corporate Office • Food Service • Healthcare • Hospitality and Entertainment</li><li>• Recreational Vehicles • Retail</li></ul>

For detailed specifications, please visit [www.omnova.com/melange](http://www.omnova.com/melange)

*Though our upholsteries can be used in many applications, customers are responsible for selecting an upholstery with attributes that meet the requirements of the specific end-use application – not all upholstery is suitable for all applications.*

*Multiple factors affect fabric durability and appearance retention, including end-user application and proper maintenance. Wyzenbeek results above 100,000 double rubs have not been shown to be a reliable indicator of increased fabric lifespan.*

[www.omnova.com](http://www.omnova.com)



World Headquarters  
25435 Harvard Road  
Beachwood, OH 44122  
United States  
PHONE +1 800 457-9900

ALL OMNOVA PRODUCTS AND SERVICES ARE OFFERED AND SOLD SUBJECT TO THE OMNOVA STANDARD TERMS AND CONDITIONS OF SALE AGREEMENT SET FORTH AT [WWW.OMNOVA.COM](http://WWW.OMNOVA.COM)

\*ACT Performance Guidelines icons are registered certification marks owned by the Association for Contract Textiles, Inc. BOLTAFLEX and PREFIXX are registered trademarks and BOLTAFLEX ETHOS is a trademark of OMNOVA Solutions Inc.

© 2020 OMNOVA Solutions Inc. January 2020