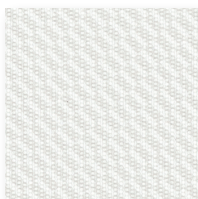
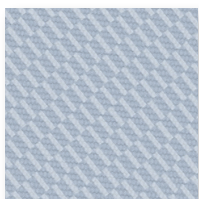


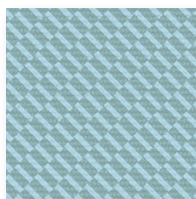
Lollipop
543327



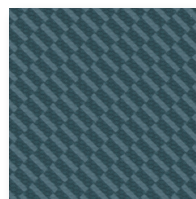
Dream On
543312



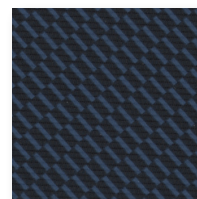
Blue Skies
543313



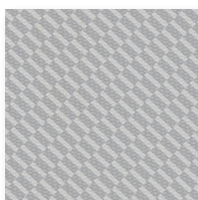
Island Time
543319



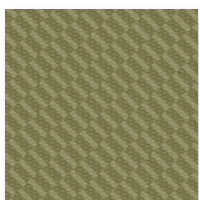
Miami Beach
543320



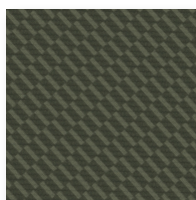
Favorite Jeans
543315



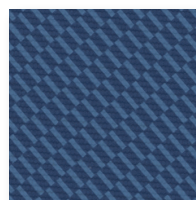
Big City
543323



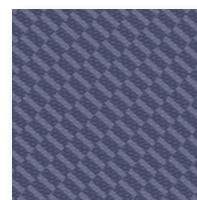
Neon Moss
543321



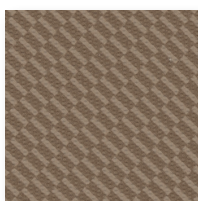
Cash Money
543322



True Blue
543314



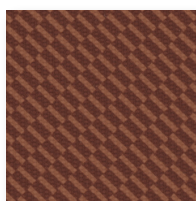
Grape Snow Cone
543316



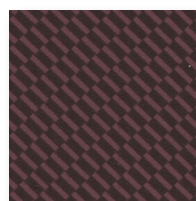
Waffle Cone
543325



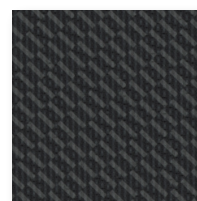
Golden Hour
543324



Pumpkin Spice
543326



Wine Down
543317



Lights Out
543318

Content Features

100% vinyl face, polyester knit backing

- Phthalate free
- Flame Retardant (FR) free
- Formulated with EU and EPA FIFRA registered and approved biocides

Finish

PreFixx® protective finish for increased stain resistance and easy cleaning. Bleach cleanable and may be disinfected with a variety of hospital grade disinfectants without discoloring or damaging the finish. Disinfection does not replace the need for regular care and maintenance. For a list of recommended disinfectants, view the Coated Fabrics Chemical Resistance Technical Bulletin located at https://www.omnova.com/fileadmin/Resource_Center/Coated_Fabrics/Technical_Bulletins/OMN-ChemRes-TB.pdf.

Weight

28 oz/lin. yd [18.7 oz/yd²] / 849 g/lin. m [619 g/m²]

Width

54 in [137 cm]

Performance Requirements

Meets ACT Performance Guidelines | CFFA Healthcare 201 | MAS Certified Green®



Also meets or exceeds:

- BIFMA - Class A
- CFFA-1a Wyzenbeek - 1.3 million double rubs (cotton duck abradant)
- Fungal resistance ASTM G-21-13
- Bacterial resistance AATCC 147-2011 & AATCC 100-2004
- Boston Fire Dept. IX-1
- California Technical Bulletin 117-2013, Section 1
- FAR 25.853a & Appendix F Part 1 (a)(1)(ii)
- Federal Specification CID A-A-2950A
- ASTM E-84 Adhered to GRC, Class 1 or A
- FMVSS-302
- IMO Part 8 Upholstered Furniture 3.1 Smoldering Cigarette
- IMO Part 8 Upholstered Furniture 3.2 Propane Flame
- NFPA 701 Small Scale
- NFPA 260, Class 1
- Port Authority of NY/NJ
- UFAC Fabric, Class 1

Applications

Indoor/Outdoor

- Corporate Office • Food Service • Healthcare • Hospitality and Entertainment
- Marine • Recreational Vehicles • Retail

Though our upholstery can be used in many applications, customers are responsible for selecting an upholstery with attributes that meet the requirements of the specific end-use application – not all upholstery is suitable for all applications.

Multiple factors affect fabric durability and appearance retention, including end-user application and proper maintenance. Wyzenbeek results above 100,000 double rubs have not

For additional cleaning instructions and detailed specification information, visit: www.omnova.com

OMNOVA
A Division of **SURTECO**

North American Office
32125 Solon Road
Suite 150
Solon, OH 44139
United States
PHONE +1 800-457-9900

ALL OMNOVA PRODUCTS AND SERVICES ARE OFFERED AND SOLD SUBJECT TO THE OMNOVA STANDARD TERMS AND CONDITIONS OF SALE AGREEMENT SET FORTH AT WWW.OMNOVA.COM

*ACT Performance Guidelines icons are registered certification marks owned by the Association for Contract Textiles, Inc.
CFFA Healthcare 201 icon is a registered certification mark owned by the Chemical Fabrics & Film Association, Inc.
BOLTAFLX, NAUTOLEX and PREFIXX are registered trademarks of OMNOVA Solutions Inc.
Designed and manufactured by OMNOVA Solutions. Rev 8.15.2024.

© 2024 OMNOVA Solutions Inc.