

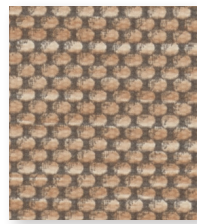
Denim  
539568



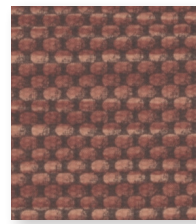
Alabaster  
539571



Stone  
539572



Peachy  
539569



Rusted  
539559



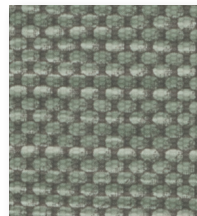
Earthen  
539562



Reed  
539573



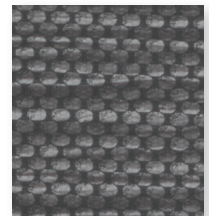
Glow  
539575



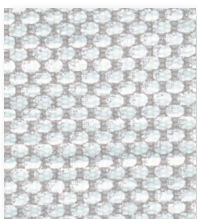
Lichen  
539564



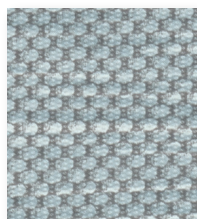
Gray Pine  
539563



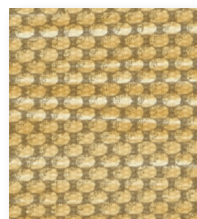
Smoke  
539560



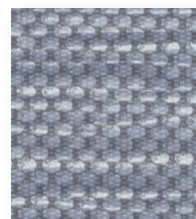
Cloudy  
539570



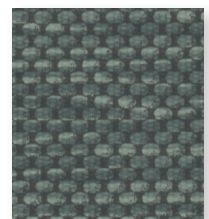
Rain  
539567



Dandelion  
539574



Chambray  
539566



Crocodile  
539565



## Content Features

100% PVC face, polyester terry loop knit backing  
Eco-preferred construction

- Phthalate free
- Antimicrobial (MR) and flame retardant (FR) free
- Complies with Section 101: Lead, and Section 108: Phthalates of the CPSIA and RoHS directive (Updated March 2015)

## Finish

**PreFixx®** protective finish for increased stain resistance and easy cleaning. Bleach cleanable and may be disinfected with a variety of hospital grade disinfectants without discoloring or damaging the finish. Disinfection does not replace the need for regular care and maintenance. For a list of recommended disinfectants, view the Coated Fabrics Chemical Resistance Technical Bulletin located at

[https://www.omnova.com/fileadmin/Resource\\_Center/Coated\\_Fabrics/Technical\\_Bulletins/OMN-ChemRes-TB.pdf](https://www.omnova.com/fileadmin/Resource_Center/Coated_Fabrics/Technical_Bulletins/OMN-ChemRes-TB.pdf).

## Weight

28 oz/lin. yd [18.7 oz/yd<sup>2</sup>] / 849 g/lin. m [619 g/m<sup>2</sup>]

## Width

54 in [137 cm]

## Repeat

18" wide x 18" high

## Performance Requirements

Meets ACT Performance Guidelines | CFFA Healthcare 201 | MAS Certified Green® | Ethos™



Also meets or exceeds:

- CFFA-1a Wyzenbeek - 1.3 million double rubs (cotton duck abradant)
- BIFMA, Class A
- California Technical Bulletin 117-2013, Section 1
- NFPA 260, Class 1
- UFAC Fabric, Class 1

## Applications

Indoor

- Corporate Office • Food Service • Healthcare • Hospitality and Entertainment
- Recreational Vehicles • Retail

*Though our upholsteries can be used in many applications, customers are responsible for selecting an upholstery with attributes that meet the requirements of the specific end-use application – not all upholstery is suitable for all applications.*

*Multiple factors affect fabric durability and appearance retention, including end-user application and proper maintenance. Wyzenbeek results above 100,000 double rubs have not been shown to be a reliable indicator of increased fabric lifespan.*

For additional cleaning instructions and detailed specification information, visit: [www.omnova.com](http://www.omnova.com)

# OMNOVA

A Division of SURTECO

## North American Office

32125 Solon Road  
Suite 150  
Solon, OH 44139  
United States

PHONE +1 800-457-9900

ALL OMNOVA PRODUCTS AND SERVICES ARE OFFERED AND SOLD SUBJECT TO THE OMNOVA STANDARD TERMS AND CONDITIONS OF SALE AGREEMENT SET FORTH AT [WWW.OMNOVA.COM](http://WWW.OMNOVA.COM)

\*ACT Performance Guidelines icons are registered certification marks owned by the Association for Contract Textiles, Inc.  
CFFA Healthcare 201 icon is a registered certification mark owned by the Chemical Fabrics & Film Association, Inc.  
BOLTAFLEX, NAUTOLEX and PREFIXX are registered trademarks of OMNOVA Solutions Inc.  
Designed and manufactured by OMNOVA Solutions. Rev 8.15.2024.

© 2024 OMNOVA Solutions Inc.

