

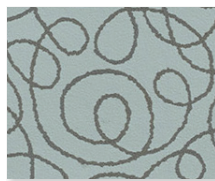
Cobblestone
532963*



Icicle
532962*



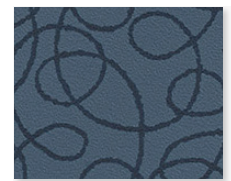
Sulfur
532965*



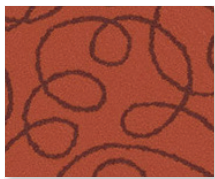
Mist
532964*



Shale
532967*



Blue Danube
532966*



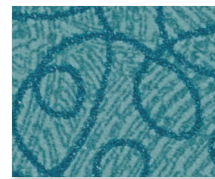
Terracotta
532968*



White Gold
514969



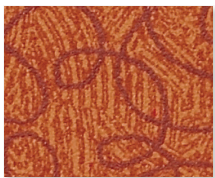
Stone
514836



Teal Wave
514628



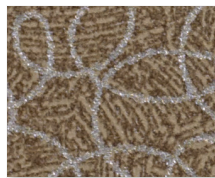
Aloe
514703



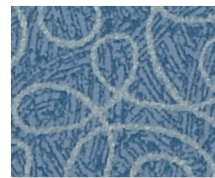
Persimmon
514700



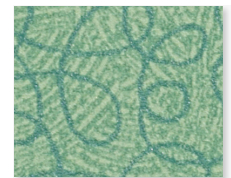
Golden Rod
515040



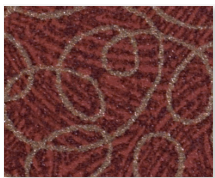
Shitake
514970



Reflection Blue
514705



Spearmint
521881



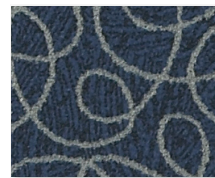
Lava
514658



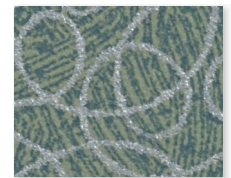
Cinnamon
514731



Coppertone
540593



Basin Blue
540591



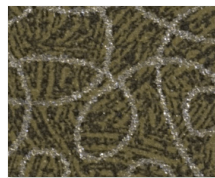
Sea Breeze
514704



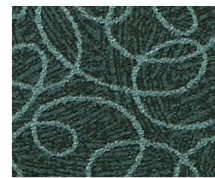
Freesia
514625



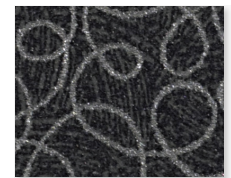
Espresso
514709



Olive
514665



Spruce
514693



Midnight
540594

* Features a simplified Venue design for a fresh look.



Content	100% PVC face, polyester brushed knit backing
Finish	PreFixx® protective finish for increased stain resistance and easy cleaning. Bleach cleanable and may be disinfected with a variety of hospital grade disinfectants without discoloring or damaging the finish. Disinfection does not replace the need for regular care and maintenance. For a list of recommended disinfectants, view the Coated Fabrics Chemical Resistance Technical Bulletin located at https://www.omnova.com/fileadmin/Resource_Center/Coated_Fabrics/Technical_Bulletins/OMN-ChemRes-TB.pdf .
Weight	28 oz/lin. yd [18.7 oz/yd ²] / 849 g/lin. m [619 g/m ²]
Width	54 in [137 cm]
Performance Requirements	Meets or exceeds ACT Performance Guidelines CFFA Healthcare 201 Certified



Also meets or exceeds:

- CFFA-1a Wyzenbeek - 1.3 million double rubs (cotton duck abradant)
- Fungal resistance ASTM G-21-13
- Bacterial resistance AATCC 147-2011 & AATCC 100-2004
- Oil resistance CFFA-13
- Surface resistance AATCC-76 Antistatic
- Urine resistance AATCC-6 Colorfastness to Acids and Alkali
- Resistance to sulfide stain ASTM D 1712
- BIFMA, Class A
- California Technical Bulletin 117-2013, Section 1
- IMO Part 8 Upholstered Furniture 3.1 Smoldering Cigarette
- IMO Part 8 Upholstered Furniture 3.2 Propane Flame
- NFPA 260, Class 1
- UFAC Fabric, Class 1



Applications	Indoor/Outdoor • Corporate Office • Food Service • Healthcare • Hospitality and Entertainment • Recreational Vehicles • Retail
---------------------	--

Though our upholsteries can be used in many applications, customers are responsible for selecting an upholstery with attributes that meet the requirements of the specific end-use application – not all upholstery is suitable for all applications.

Multiple factors affect fabric durability and appearance retention, including end-user application and proper maintenance. Wyzenbeek results above 100,000 double rubs have not been shown to be a reliable indicator of increased fabric lifespan.

For additional cleaning instructions and detailed specification information, visit: www.omnova.com



North American Office
 25435 Harvard Road
 Beachwood, OH 44122
 United States
 PHONE +1 800 457-9900



ALL OMNOVA PRODUCTS AND SERVICES ARE OFFERED AND SOLD SUBJECT TO THE OMNOVA STANDARD TERMS AND CONDITIONS OF SALE AGREEMENT SET FORTH AT WWW.OMNOVA.COM

*ACT Performance Guidelines icons are registered certification marks owned by the Association for Contract Textiles, Inc.
 CFFA Healthcare 201 icon is a registered certification mark owned by the Chemical Fabrics & Film Association, Inc.
 BOLTAFLEX, NAUTOLEX and PREFIX are registered trademarks of OMNOVA Solutions Inc.
 Designed and manufactured by OMNOVA Solutions Inc.

© 2023 OMNOVA Solutions Inc. DTC. Jan 2024.
 OMNOVA – A Division of SURTECO.