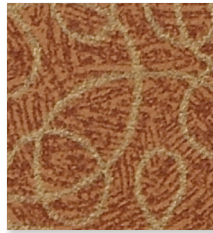


Aloe  
540597



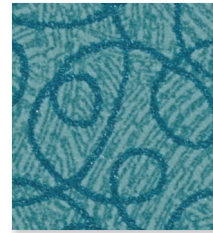
Stone  
540602



Cinnamon  
540601



Aloe  
540597



Teal Wave  
540590



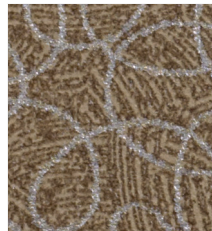
Sea Breeze  
540598



Persimmon  
540596



Freesia  
540772



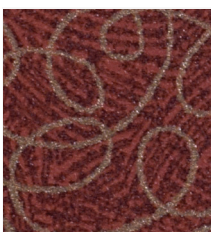
Shitake  
540603



Reflection Blue  
540599



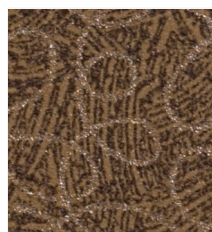
Olive  
540595



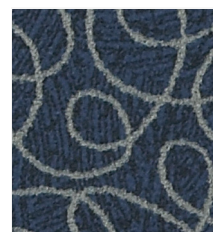
Lava  
540592



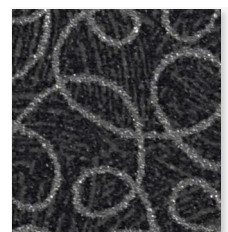
Espresso  
540600



Coppertone  
540593



Basin Blue  
540591



Midnight  
540594

## Content

100% PVC face, polyester brushed knit backing

## Finish

**PreFixx®** protective finish for increased stain resistance and easy cleaning.

Bleach cleanable and may be disinfected with a variety of hospital grade disinfectants without discoloring or damaging the finish. Disinfection does not replace the need for regular care and maintenance. For a list of recommended disinfectants, view the Coated Fabrics Chemical Resistance Technical Bulletin located at

[https://www.omnova.com/fileadmin/Resource\\_Center/Coated\\_Fabrics/Technical\\_Bulletins/OMN-ChemRes-TB.pdf](https://www.omnova.com/fileadmin/Resource_Center/Coated_Fabrics/Technical_Bulletins/OMN-ChemRes-TB.pdf).

## Weight

28 oz/lin. yd [18.7 oz/yd<sup>2</sup>] / 849 g/lin. m [619 g/m<sup>2</sup>]

## Width

54 in [137 cm]

## Performance Requirements

Meets or exceeds ACT Performance Guidelines | CFFA Healthcare 201 Certified



Also meets or exceeds:

- CFFA-1a Wyzenbeek - 1.3 million double rubs (cotton duck abradant)
- Fungal resistance ASTM G-21-13
- Bacterial resistance AATCC 147-2011 & AATCC 100-2004
- Oil resistance CFFA-13
- Surface resistance AATCC-76 Antistatic
- Urine resistance AATCC-6 Colorfastness to Acids and Alkali
- Resistance to sulfide stain ASTM D 1712
- BIFMA, Class A
- California Technical Bulletin 117-2013, Section 1
- IMO Part 8 Upholstered Furniture 3.1 Smoldering Cigarette
- IMO Part 8 Upholstered Furniture 3.2 Propane Flame
- NFPA 260, Class 1
- UFAC Fabric, Class 1

## Applications

Indoor/Outdoor

- Corporate Office • Food Service • Healthcare • Hospitality and Entertainment
- Recreational Vehicles • Retail

*Though our upholsteries can be used in many applications, customers are responsible for selecting an upholstery with attributes that meet the requirements of the specific end-use application – not all upholstery is suitable for all applications.*

*Multiple factors affect fabric durability and appearance retention, including end-user application and proper maintenance. Wyzenbeek results above 100,000 double rubs have not been shown to be a reliable indicator of increased fabric lifespan.*

For additional cleaning instructions and detailed specification information, visit: [www.omnova.com](http://www.omnova.com)

**OMNOVA**  
A Division of **SURTECO**

**North American Office**  
25435 Harvard Road  
Beachwood, OH 44122  
United States  
PHONE +1 800 457-9900

ALL OMNOVA PRODUCTS AND SERVICES ARE OFFERED AND SOLD SUBJECT TO THE OMNOVA STANDARD TERMS AND CONDITIONS OF SALE AGREEMENT SET FORTH AT [WWW.OMNOVA.COM](http://WWW.OMNOVA.COM)

\*ACT Performance Guidelines icons are registered certification marks owned by the Association for Contract Textiles, Inc.

CFFA Healthcare 201 icon is a registered certification mark owned by the Chemical Fabrics & Film Association, Inc.

BOLTAFLEX and PREFIXX are registered trademarks of OMNOVA Solutions Inc.

Designed and manufactured by OMNOVA Solutions.

© 2023 OMNOVA Solutions Inc. DTC: Jan 2024.

OMNOVA – A Division of SURTECO.