



Aqua
514659



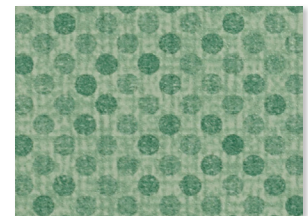
Neutral
518383



Sunshine
518383



Chartreuse
514590



Chive
514850



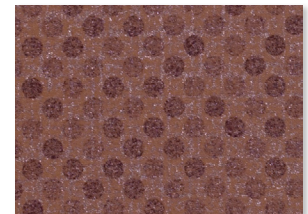
Apricot
525976



Adobe
514831



Rouge
514987



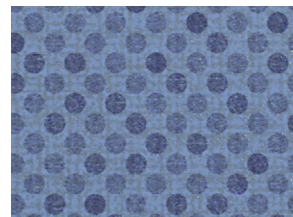
Santa Rosa
514797



Aqua
514659



Shimmer
514624



Periwinkle
514986



Crocus
514779



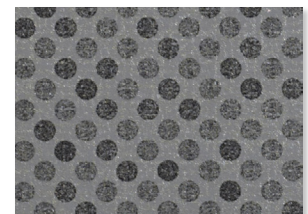
Maplewood
514941



Mocha
514832



Pewter
514830



Graphite
514867



Content	100% vinyl face, polyester knit backing
Features	- Phthalate free - Formulated with EU and EPA FIFRA registered and approved biocides
Finish	PreFixx® protective finish for increased stain resistance and easy cleaning. Bleach cleanable and may be disinfected with a variety of hospital grade disinfectants without discoloring or damaging the finish. Disinfection does not replace the need for regular care and maintenance. For a list of recommended disinfectants, view the Coated Fabrics Chemical Resistance Technical Bulletin located at https://www.omnova.com/fileadmin/Resource_Center/Coated_Fabrics/Technical_Bulletins/OMN-ChemRes-TB.pdf .
Weight	28 oz./lin. yd [18.7 oz/yd ²] / 849 g/lin. m [619 g/m ²]
Width	54 in [137 cm]
Performance Requirements	Meets or exceeds ACT Performance Guidelines CFFA Healthcare 201 Certified



Also meets or exceeds:

- CFFA-1a wyzenbeek - 1.3 million double rubs abrasion (cotton duck abradant)
- Fungal resistance ASTM G-21-13
- Bacterial resistance AATCC 147-2011 & AATCC 100-2004
- BIFMA, Class A
- Boston Fire Dept. IX-1
- California Technical Bulletin 117-2013, Section 1
- FAR 25.853A
- Federal Standard CID A-A-2950-A
- FMVSS-302
- IMO Part 8 Upholstered Furniture 3.1 Smoldering Cigarette
- IMO Part 8 Upholstered Furniture 3.2 Propane Flame
- NFPA 701 Small Scale
- NFPA 260, Class 1
- NY/NJ Port Authority
- UFAC Fabric, Class 1

Applications

Indoor/Outdoor

- Corporate Office • Food Service • Healthcare • Hospitality and Entertainment
- Recreational Vehicles • Retail

Though our upholsteries can be used in many applications, customers are responsible for selecting an upholstery with attributes that meet the requirements of the specific end-use application – not all upholstery is suitable for all applications.

Multiple factors affect fabric durability and appearance retention, including end-user application and proper maintenance. Wyzenbeek results above 100,000 double rubs have not been shown to be a reliable indicator of increased fabric lifespan.

For additional cleaning instructions and detailed specification information, visit: www.omnova.com



North American Office
25435 Harvard Road
Beachwood, OH 44122
United States
PHONE +1 800 457-9900

ALL OMNOVA PRODUCTS AND SERVICES ARE OFFERED AND SOLD SUBJECT TO THE OMNOVA STANDARD TERMS AND CONDITIONS OF SALE AGREEMENT SET FORTH AT WWW.OMNOVA.COM

*ACT Performance Guidelines icons are registered certification marks owned by the Association for Contract Textiles, Inc.
CFFA Healthcare 201 icon is a registered certification mark owned by the Chemical Fabrics & Film Association, Inc.
BOLTAFLEX, NAUTOLEX and PREFIXX are registered trademarks of OMNOVA Solutions Inc.
Designed and manufactured by OMNOVA Solutions.

© 2022 OMNOVA Solutions Inc. DTC. 80873. Jan 2024.
OMNOVA - A Division of SURTECO

