

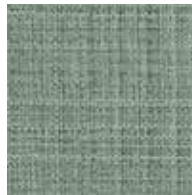
Pool
544721



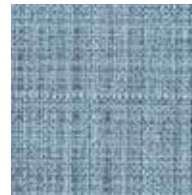
Lanolin
544714



Seagrass
544725



Loch
544723



Placid
544722



Iris
544718



Hay
544715



Lichen
544726



Dublin
544724



Pool
544721



Cobalt
544720



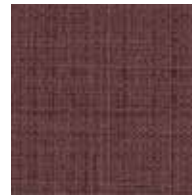
Golden Rod
544712



Autumnal
544727



Samba
544729



Royale
544728



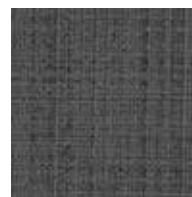
Buffalo
544713










Ovis
544717



Flannel
544716



Prodigal
544719

Content	100% PVC face, polyester terry loop knit backing
Features	Eco-preferred construction <ul style="list-style-type: none"> - Phthalate free - Antimicrobial (MR) and flame retardant (FR) free - Complies with Section 101: Lead, and Section 108: Phthalates of the CPSIA and RoHS directive (Updated March 2015) - Formulated without PFAS (Per- and Polyfluoroalkyl Substances) Chemicals
Finish	PreFixx® protective finish for increased stain resistance and easy cleaning. Bleach cleanable and may be disinfected with a variety of hospital grade disinfectants without discoloring or damaging the finish. Disinfection does not replace the need for regular care and maintenance. For a list of recommended disinfectants, view the Coated Fabrics Chemical Resistance Technical Bulletin located at https://www.omnova.com/fileadmin/Resource_Center/Coated_Fabrics/Technical_Bulletins/OMN-ChemRes-TB.pdf .
Weight	28 oz/lin. yd [18.7 oz/yd ²] / 849 g/lin. m [619 g/m ²]
Width	54 in [137 cm]
Repeat	18" wide x 18" high
Performance Requirements	Meets or exceeds: <p>ACT Performance Guidelines CFFA Healthcare 201 Certified Ethos™</p> <div style="display: flex; justify-content: space-around; align-items: center;">        </div> <p>Also meets or exceeds:</p> <ul style="list-style-type: none"> • CFFA-1a Wyzenbeek - 1.3 million double rubs (cotton duck abradant) • BIFMA, Class A • California Technical Bulletin 117-2013, Section 1 • NFPA 260, Class 1 • UFAC Fabric, Class 1
Applications	Indoor <ul style="list-style-type: none"> • Corporate Office • Food Service • Healthcare • Hospitality and Entertainment • Recreational Vehicles • Retail

Though our upholsteries can be used in many applications, customers are responsible for selecting an upholstery with attributes that meet the requirements of the specific end-use application – not all upholstery is suitable for all applications.

Multiple factors affect fabric durability and appearance retention, including end-user application and proper maintenance. Wyzenbeek results above 100,000 double rubs have not been shown to be a reliable indicator of increased fabric lifespan.

For additional cleaning instructions and detailed specification information, visit: www.omnova.com

OMNOVA
A Division of **SURTECO**

North American Office
25435 Harvard Road
Beachwood, OH 44122
United States
PHONE +1 800 457-9900

ALL OMNOVA PRODUCTS AND SERVICES ARE OFFERED AND SOLD SUBJECT TO THE OMNOVA STANDARD TERMS AND CONDITIONS OF SALE AGREEMENT SET FORTH AT WWW.OMNOVA.COM

*ACT Performance Guidelines icons are registered certification marks owned by the Association for Contract Textiles, Inc.
CFFA Healthcare 201 icon is a registered certification mark owned by the Chemical Fabrics & Film Association, Inc.
BOLTAFLEX and PREFIX are registered trademarks of OMNOVA Solutions Inc.
Designed and manufactured by OMNOVA Solutions.

© 2023 OMNOVA Solutions Inc. #82524. June 2023
OMNOVA – A Division of SURTECO.