

Capitano™



Mandarin
517910



Lemon Drop
513660



Pennywise
517590



Daredevil
513952



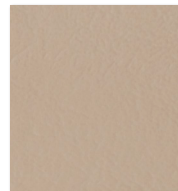
Totally Tan
513937



Party Pink
517589



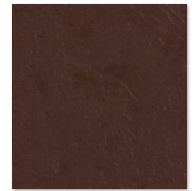
Marooned
517586



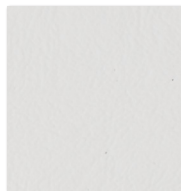
Sand Dollar
513903



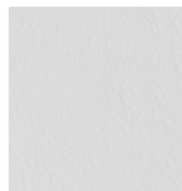
Wild Orchid
517593



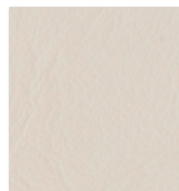
Root Beer
517592



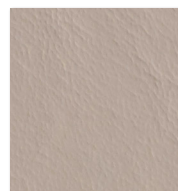
Cloud
513658



Beach White
519970



Conch Shell
514006



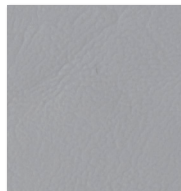
Heron
517585



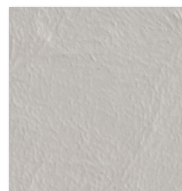
Riviera
513659



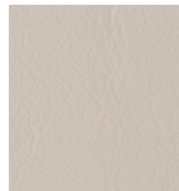
Blue Chip
513846



Techno Gray
513887



Nuance
517587



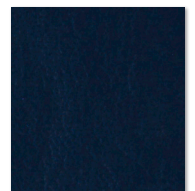
Sandshell
514287



Rain
517591



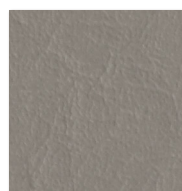
Cancun Blue
517582



Eclipse
513900



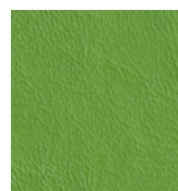
Cityscape
518236



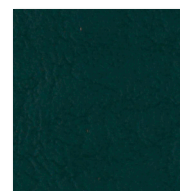
Cornerstone
517583



Daiquiri
517584



Parakeet
517588



Galapagos
514009








Cyberspace
513832

Capitano™

TYPICAL PROPERTIES

Content	100% vinyl face, polyester knit backing
Width - inches	54
Roll Size - linear yards	40
Weight - oz. / per linear yard	30

PERFORMANCE REQUIREMENTS

Meets or exceeds ACT Performance Guidelines	    
Abrasion Resistance (CFFA-1a) - cycles	
Wyzenbeek stainless steel wire screen	6,000
Cotton duck abradant	50,000
Mildew Resistance (ASTM G-21)	Pass
Cold Crack - °F	-20
U.V. Resistance (CFFA-2)	
- Hours outdoor	650
Flame Retardant Rating	
- BIFMA, Class A	Pass
- California Technical Bulletin 117-2013, Section 1	Pass
- NFPA 260, Class 1	Pass
- UFAC Fabric, Class 1	Pass
APPLICATIONS	Interior/Exterior Upholstery

Though our upholstery can be used in many applications, customers are responsible for selecting an upholstery with attributes that meet the requirements of the specific end-use application – not all upholstery is suitable for all applications.

**Multiple factors affect fabric durability and appearance retention, including end-user application and proper maintenance. Wyzenbeek results above 100,000 double rubs have not been shown to be a reliable indicator of increased fabric lifespan.*

Nautolex® products are easily cleaned. For specific cleaning instructions, see downloads at www.omnova.com/nautolex
Tip Card No. 80876