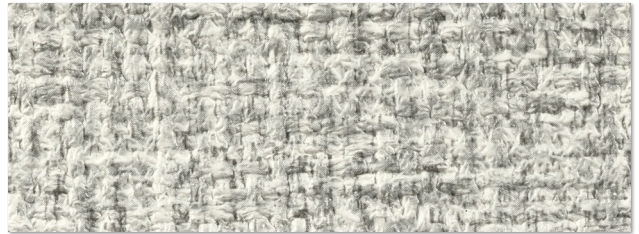


Flooring



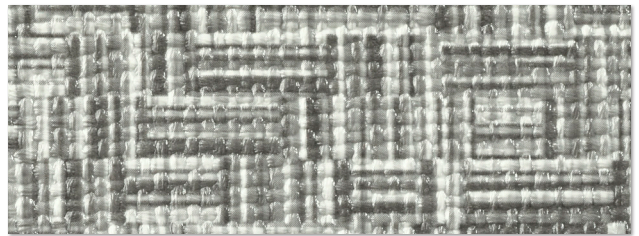
Sisal Warm
530028



Sisal Cool
530027



Interwoven Warm
529424



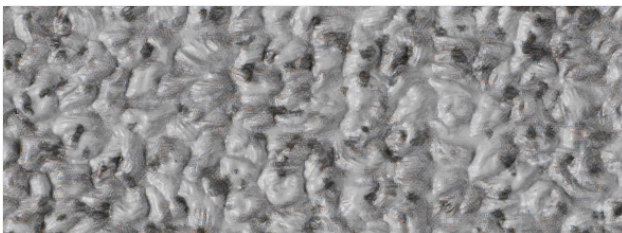
Interwoven Cool
530026



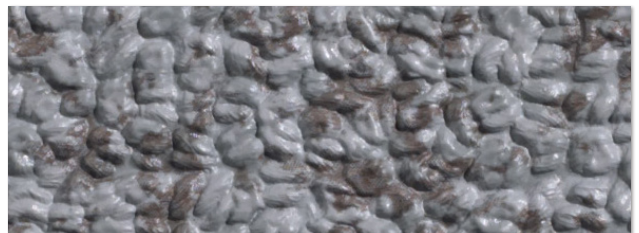
Sandstone
524307



Natural
524309



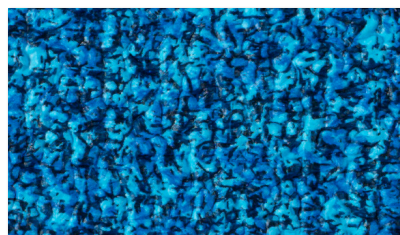
Storm Gray
524306



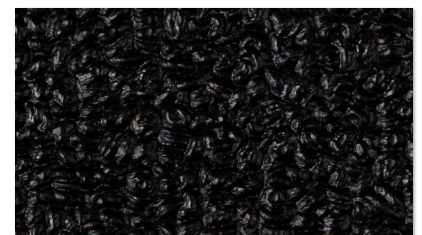
Gray
524311



Shark
522755





Dark Blue
524310



Black
524305

Flooring

TYPICAL PROPERTIES	74" Flooring (Except Gray 524311)	74" Flooring - Gray 524311
Content	100% vinyl face, polyester knit backing	100% vinyl face, polyester nonwoven backing
Width - inches	74	74
Roll Size - linear yards	25	25
Weight - oz. / per linear yard	50	50
PERFORMANCE REQUIREMENTS		
Meets or exceeds ACT® Performance Guidelines		
Abrasion Resistance (CFFA-1a) - cycles		
Cotton duck abradant	50,000	50,000
Mildew Resistance (ASTM G-21)	Pass	Pass
U.V. Resistance (CFFA-2)		
- Hours outdoor	650	650
Flame Retardant Rating		
- California Technical Bulletin 117-2013, Section 1	Pass	Pass
- UFAC Fabric, Class 1	Pass	Pass
APPLICATIONS	Interior/Exterior Flooring	Interior/Exterior Flooring

Though our upholstery can be used in many applications, customers are responsible for selecting an upholstery with attributes that meet the requirements of the specific end-use application – not all upholstery is suitable for all applications.

Nautolex® products are easily cleaned. For specific cleaning instructions, see downloads at www.omnova.com/nautolex
Tip Card No. 80884